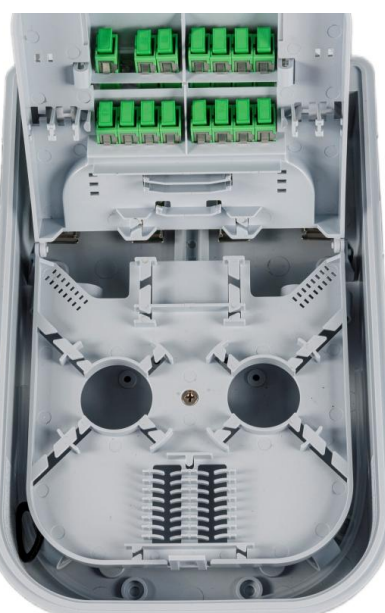
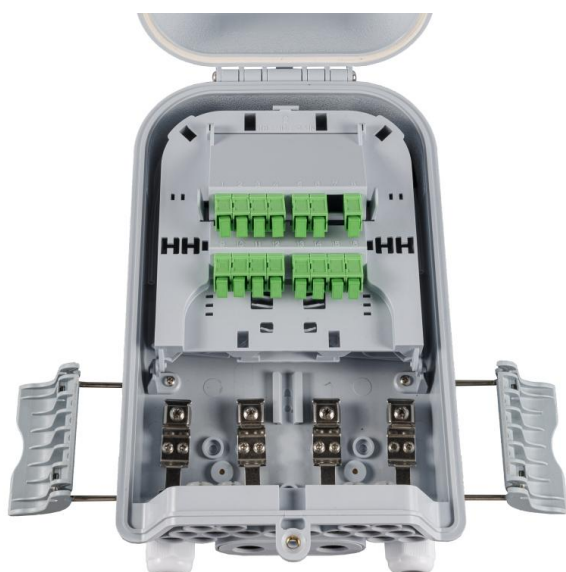


FDB-16Q2-16A

16-Core Outdoor Fiber Optic Distribution Box

Application

- Engineered for FTTx applications, providing robust fiber management for splicing, splitting, and patching.
- IP65-rated enclosure ensures reliable operation in indoor or outdoor settings, with options for wall or pole mounting.



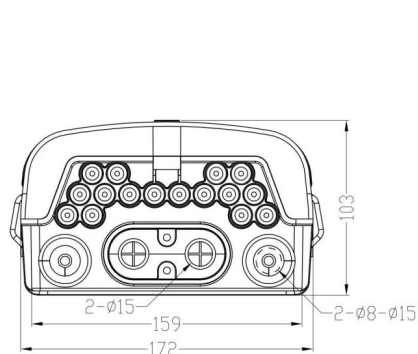
Features & Benefits

- Built with premium engineering plastic for superior resistance to environmental challenges.
- Includes one splice tray supporting 8 or 16 fiber splices for flexible configuration.
- Adapter tray designed to hold up to 16 SC adapters for efficient connectivity.
- Incorporates a mid-span port to support loop-through cable setups.
- Suitable for both wall-mounted and pole-mounted installations, enhancing deployment versatility.
- Compact design ensures efficient use of space without compromising functionality.
- Provides excellent mechanical protection for fiber optic components in demanding conditions.

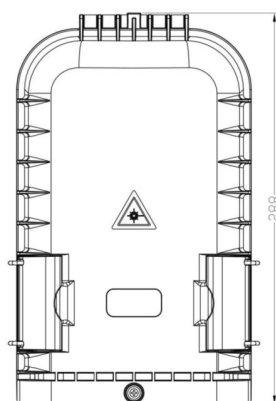
Specifications

Part No.	FDB-16Q2-16A
Dimensions	288×172×103 mm
Enclosure Material	PC+ABS
Cable Entry Ports	2 Mid-span ports × Ø15mm
Branches	2 × PG13.5
Cable Exit Ports	16 Drop ports × Ø2-4.6mm
Patching Capacity	16 SC Adapters
Splicing Capacity	8/16 Fibers (Single-core)
Splice Tray	1 Tray
Suitable Splitter	1×8 or 1×16 Micro PLC Splitters
Material of Tray	ABS
IP Rating	IP65
Mounting	Wall / Pole Mount

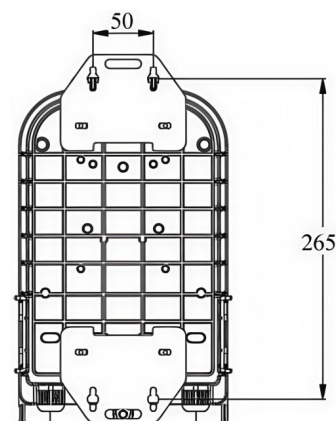
Dimension Drawing



Ports and Width/Height Dimensions

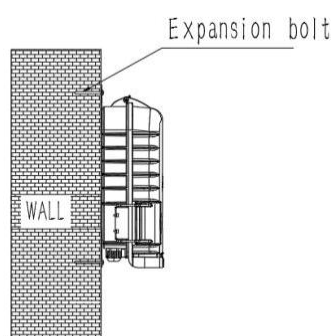


Top View

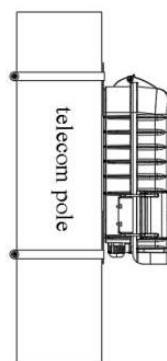


Metal Plate Installation Positions
and Dimensions

Wall-mounted & Pole-mounted




Wall Mount



Pole Mount

Accessories

Picture	Name	Size	Quantity
	Wall-mounting Kit (for Wall mount Only)	/	4 Pairs
	Pole-mounting Kit (for Pole mount Only)	Clamp: Ø216mm	2 PCS
	Metal Plate	/	2 PCS
	Nylon Cable Tie	3×100mm	10 PCS
	Splice Sleeve	1.2/45mm	8-16 PCS/Tray
	Hose Clamp	/	4 PCS
	PG Gland	PG13.5	2 PCS
	Key	/	1 PC
	Installation Menu	/	1 PC

Packing List

Part No.	Carton Size	PCS/CTN	G.W.
FDB-16Q2-16A	62×41×35 CM	10	13 KGS